

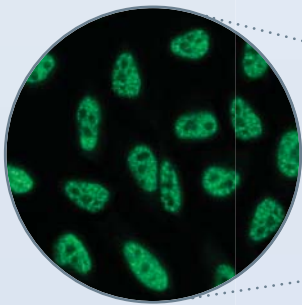
HumaScope Fluo^{LED}

Keep an Eye on What's Important

- > Trinocular fluorescence microscope
- > Up to 4-channel LED fluorescence
- > High performance, reliable operations



HUMASCOPE LINE



Movie



HumaScope Line

Human

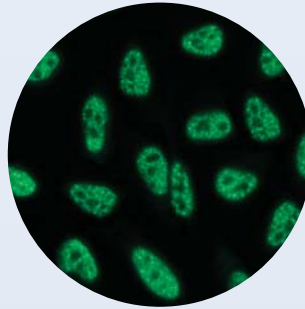
Diagnostics Worldwide

HumaScope Fluo^{LED}

Change your View, See Things in a Different Light

Trinocular Tube

- > Lightpath selection
- > 100% camera observation



Fluorescence Illumination

- > Up to 4 channels (LED 3.6 V, 3 W)
 - Blue: exciting 420–485 nm, > 515 nm
 - Green: exciting 460–485 nm, > 590 nm
 - Violet: exciting 395–415 nm, > 455 nm
 - UV: exciting 330–400 nm, > 425 nm

Nosepiece

- > 5 fold inverted revolver

Fine Focus

- > 2 μm increased
- > Tension adjustment on coarse focus adjustment knob

LED Illumination

- > LED, 3W brightness adjustable
- > No heat development

Head

- > 360° binocular rotatable
- > WF 10x/22 mm eyepiece
- > Interpupillary distance adjustment range 53–75 mm
- > Diopter adjustment ± 5
- > 30° insight for economical work

Objectives

- > Magnifications 40-1000x
- > Infinity plan achromatic
 - 4x/0.10
 - 10x/0.25
 - 40x/0.85, FL (spring-loaded)
 - 100x/1.25, oil (spring-loaded)

Stage

- > Two slides simultaneously
- > One hand slide exchange holder
- > Stage movement by roller guide with upper limit stopper system (rack & pinion)
- > Anti-scratch coating



A Convincing System

- > Fascinating price-performance ratio
- > Maintenance-free LED illumination
- > Robust designed mechanics
- > Fatigue proofed working

Excellent Optics

- > Infinity plan achromatic
- > Special fluorescence plan objective PL 40 / 0.85
- > Köhler illumination
- > Optics antifugal treated

Easy to Use

- > Ergonomically designed operating elements
- > One hand slide exchange holder
- > Darkfield microscopy (optional)
- > Phase contrast (optional)

Latest LED Illumination Technique

- > Extra strong LED illumination
- > Constant bright light
- > No heat development
- > Low power consumption



Digital Camera Set HDMI



Digital Camera Set USB

Ordering Information

HumaScope Fluo^{LED}

	REF
2-channel blue, green LEDs	14800
2-channel blue, green LEDs with recharg. batteries	14804
3-channel ultra-violet, blue, green LEDs	14801
3-channel violet, blue, green LEDs	14802
4-channel ultra-violet, violet, blue, green LEDs	14803

Accessories

	REF
Digital camera 5 MP (USB 2.0)	14000/866
Digital camera 5 MP (USB 3.0)	14000/867
Digital camera 10 MP (USB 2.0)	14000/877
Digital camera 10 MP (USB 3.0)	14000/878
Digital camera 0.78 MP (HDMI)	14000/210*
Eyepiece adapter 0.5X	14000/205
C-mount adapter 0.4X	14000/54
C-mount adapter 0.5X	14000/80
C-mount adapter adjustable 0.4X	14000/541
C-mount adapter adjustable 0.5X	14000/801

* The camera has a software embedded, could be directly connected with your display. The pictures could be saved to the SD storage device.

The logo graphic consists of a stylized, upward-pointing chevron shape composed of three horizontal bars of increasing height from left to right, rendered in a gradient of red and orange.

Human

Diagnostics Worldwide