

HumEQAS

HUMAN External Quality Assessment Service

REACH YOUR TARGET



Assess diagnostic quality by participating in a world-wide available quality assessment program

SIGN UP NOW



www.HumEQAS.de



HumEQAS

HUMAN External Quality Assessment Service

HumEQAS

ASSESS, OPTIMIZE, SUCCEED

All over the world the demand for standardization and quality control in clinical diagnostics develops rapidly. Therefore, all laboratories around the world should have access to a uniform tool enabling them to assess their quality and optimize it where necessary.

HumEQAS, HUMAN's international proficiency testing program, helps you to ensure that your laboratory results are **precise, reliable** and **comparable**.



AVAILABLE WORLDWIDE AND STABLE:

The lyophilized control sera are stored and transported at 2 to 8°C.

PROGRAM PARAMETERS CLINICAL CHEMISTRY

- alpha-Amylase
- Acid Phosphatase
- Alanine Aminotransferase (ALAT, GPT)
- Albumin
- Phosphatase
- Aspartate Aminotransferase (ASAT, GOT)
- Bilirubin direct
- Bilirubin total
- Calcium
- Chloride
- Cholesterol total
- Creatine Kinase
- Creatinine
- gamma-Glutamyl Transferase (GGT)
- Glucose
- HDL-Cholesterol
- Iron
- Lactate Dehydrogenase (LDH)
- LDL-Cholesterol
- Lithium
- Magnesium
- Pancreas Amylase
- Phosphorus
- Potassium
- Protein total
- Sodium
- Triglycerides
- Urea
- Uric Acid
- Zinc

CERTIFICATE AND TEST REPORTS

After evaluation of the proficiency testing, you will receive a certificate confirming your successful participation and a detailed statistic report.

REPORTS

- Your individual results
- Peer grouping
- Mode of distribution
- Method of distribution
- Summary report

PROFICIENCY TEST: CICH 2014-01
IN MONTH: MARCH 2014
PARTICIPANT NO.: 00012
ISSUED ON: 12.01.13

PARTICIPATING LABORATORY
PARTICIPATING LABORATORY
Contact at participating laboratory
Street address of participating laboratory
City of participating laboratory

CERTIFICATE

We hereby confirm that you participated in the proficiency test CICH 2014-01 for clinical chemistry analytes in serum. You have met the requirements of the proficiency test for the following parameters:

ALPHA-AMYLASE	CHOLESTEROL TOTAL	MAGNESIUM
ACID PHOSPHATASE	CREATINE KINASE	PANCREAS AMYLASE
ALANINE AMINOTRANSFERASE (ALAT, GPT)	CREATININE	PHOSPHORUS
ALBUMIN	GAMMA-GLUTAMYL TRANSFERASE (GGT)	POTASSIUM
PHOSPHATASE	GLUCOSE	PROTEIN TOTAL
ASPARTATE AMINOTRANSFERASE (ASAT, GOT)	HDL-CHOLESTEROL	SODIUM
BILIRUBIN DIRECT	IRON	TRIGLYCERIDES
BILIRUBIN TOTAL	LACTATE DEHYDROGENASE (LDH)	UREA
CALCIUM	LDL-CHOLESTEROL	URIC ACID
CHLORIDE	LITHIUM	ZINC

Frank Minich
Frank Minich
Product Manager
HumEQAS

HumEQAS
HUMAN External Quality Assessment Service

HUMAN Gesellschaft für Biochemie und Diagnostica GmbH
Max-Planck-Ring 21 · 65205 Wiesbaden · Germany
Tel: +49 6122 9988-0 · Fax: +49 6122 9988-100 · e-mail: humeqas@human.de · www.humeqas.de

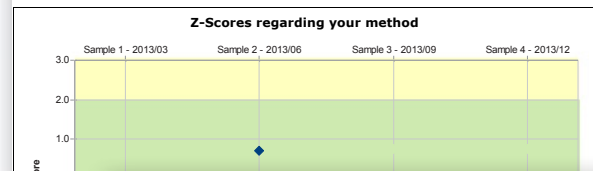
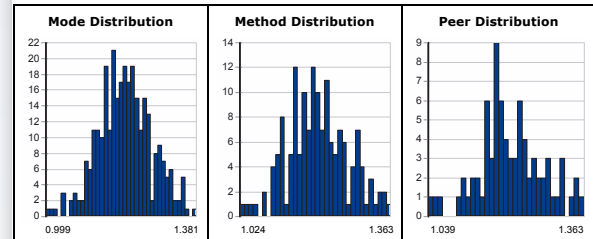
HumEQAS
Clinical Chemistry
2013 02

Calcium Report
June 2013
Sample No. 2
Sample Date:
15 June 2013
Lot No: 2013-02

Lab 123
xy Laboratory
<Address>

	Your Result: 1.251 g/L	Comparative Statistics*					Your Deviation	
		N	Mean	U	SD	CV	Z-Score	%
Method: xy	All Results	300	1.200	0.0039	0.068	5.69	0.751	4.25
Peer: xy	Your Method	153	1.201	0.0056	0.070	5.79	0.721	4.16
	Your Peer	77	1.208	0.0079	0.070	5.74	0.630	3.56

*Evaluation according to ISO 13528



HumEQAS
Clinical Chemistry
2013-02

Summary Report of all Analytes
June 2013
Sample No. 2
Sample Date:
15 June 2013
Lot No: 123456

Lab 123
xy Laboratory
<Address>

Used Method	Analyte	Z-Scores regarding the used method			
		Sample 1	Sample 2	Sample 3	Sample 4
xy	Ca	-2.159	0.751		
xy	K	1.123	1.213		
tz	Na	---	5.314		

Legend: $2 \leq |Z\text{-Score}| < 3$ $|Z\text{-Score}| \geq 3$ --- no result

10 STEPS FROM REGISTRATION TO CERTIFICATION

This is all you need to reach your target with HumEQAS.



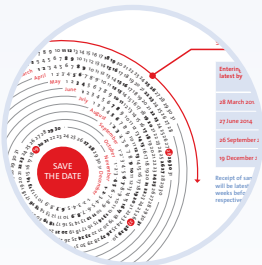
1 Go to www.HumEQAS.de



2 Request for registration access data



3 Receive registration confirmation with personal access data



4 Get information of proficiency testing schedule



5 Register online for proficiency testing



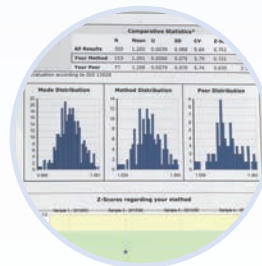
6 Receipt of HumEQAS samples with regular shipments



7 Measure HumEQAS samples



8 Enter results online by yourself or by your distributor



9 Receive statistical evaluation of results



10 Receive your certificate

SIGN UP NOW 
www.HumEQAS.de

981215/2015-07 © 2015 Human