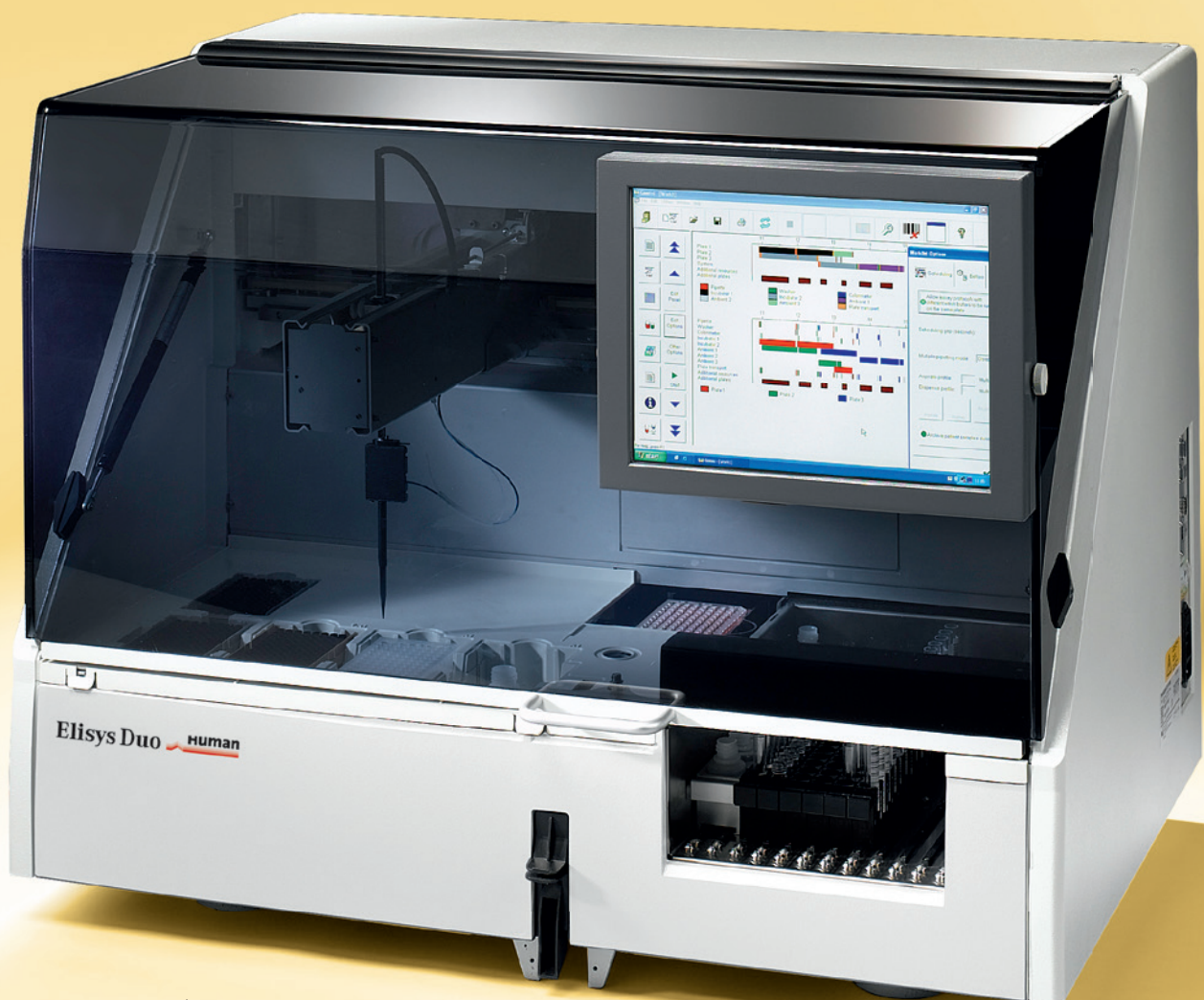


Elisys Duo

Fully Automated ELISA Analyzer

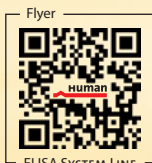
- > Optimized for medium throughput segment
- > Up to 3 plates simultaneously
- > HUMAN/IMTEC ELISA tests available
- > Engineered and manufactured in Germany and Switzerland

ELISA



Movie

Elisys Duo



Flyer

ELISA SYSTEM LINE

Human

Diagnostics Worldwide

Elisys Duo

Compact Advanced Fully Automated ELISA Analyzer

New generation of ELISA analyzer

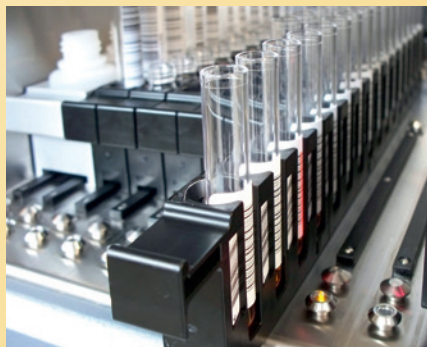
- Advanced technology
- Optimized for routine

Convincing performance

- Built-in-PC and touchscreen
- Open system
- Up to 3 plates can be loaded
- Up to 8 different tests on one plate
- Continuous loading of samples, reagents and plates
- Build-in sample and reagent barcode reader
- True walk away system
- Incubation/shaking

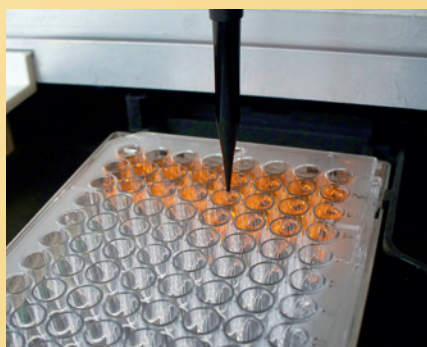
Easy and safe operation

- Operation software windows
- Barcode identification for samples and reagents
- All HUMAN and IMTEC methods are preprogrammed
- HUMAN tests specific racks
- Direct use of HUMAN/IMTEC kit components
- Disposable carbon tips
- No carry-over



High-capacity software

- 144 samples & reagents
- Primary samples
- Barcode reading
- Use of original kit bottles



High precision and safety

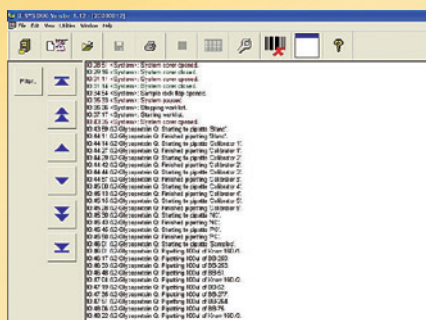
- Disposable tips

High processing security

- Event log documentation
- Password protection on several levels
- QC control program
- In-process-control features

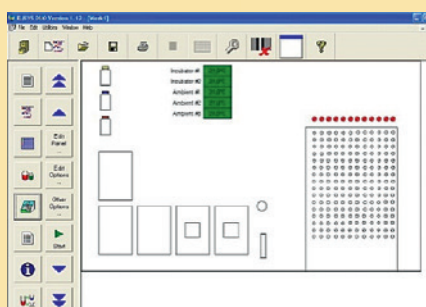
Flexible easy-to-use software

- Graphical interface
- Time management
- ASTM interface (bidirectional)



Event log documentation

- Run-specific information about hardware, software and assay processing
- Optional printout together with the results



Self-explanatory structure

- Permanent graphical update about assay status and reagent allocation
- Simple access and controlling via icons

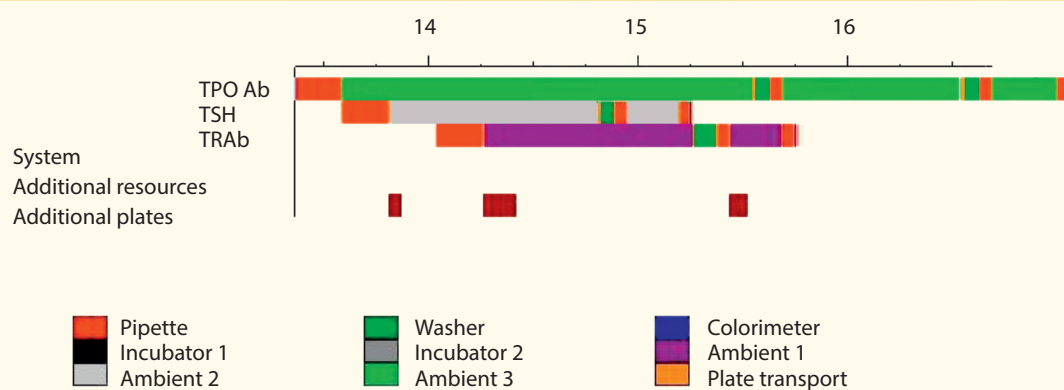


Elisys Duo

Dilution in deep-well plates (192 positions)

2 incubators (temperatures up to 45°C)

2 wash buffers



Time management

- > Real-time-mode display
- > Processing time optimizer

Elisys Duo

300 µl disposable tips

1100 µl disposable tips

Cat. No. 17200

Cat. No. 16300/10

Cat. No. 16300/11

Elisys Duo

Technical Data

2 plate fully automated ELISA analyzer

Number of plates	up to 3 plates
Number of samples	max. of 144
Number of reagents	depending on rack configuration
Controls & standard	depending on rack configuration
Dilution area	for up to 192 dilution positions (2 x 96 Deep well plate)
Number of tips	up to 3 tip racks for 300 µl or 1100 µl disposable tips
Loading	continuous loading of plates, samples and reagents

Photometer

Spectral range	400 – 700 nm
Dynamic range	– 0.100 to + 3.000 OD (measurement range 1 wavelength) – 3.000 to + 3.000 OD (measurement range 2 wavelengths)
Accuracy	± 0.005 OD or 2.5 % (whichever is greater)
Linearity	0 – 2.000 OD ± 1 %
Detection	photodiode
Read modes	OD
Filters	up to 8 positions

Pipetting system

Pipettor	Liquid pipettor for disposable tips
Liquid level detection	standard (capacitive)
Min / Max volumes	10 µl to 300 µl (with 300 µl tip) or 301 µl to 1000 µl (with 1100 µl tip)
Processing time	patient samples (100 µl/well) appr. 16 min. for 96 positions reagent (100 µl/well) appr. 4 min. for 96 positions
Accuracy	< 10 % at 20 µl, < 5 % at 100 µl
Precision	6 % at 20 µl, 3 % at 100 µl
Features	tip detection, mixing, multi-dispensing

Incubation

Capacity	2 independently controlled chambers, 1 ambient
Temperature range	ambient + 5 to 45 °C
Accuracy	– 2 °C; + 0 °C (measured in plate, 200 µl)
Uniformity	± 1.5 °C (measured in plate, 200 µl aqua)

Washing

Capacity	up to 3 buffers. 2 x 2 l bottles, 1 x 1 l bottle
Wash head	1 x 8
Dispense volume	200 – 999 µl/well
Precision	10 % CV at 300 µl
Residual volume	< 3 µl in U Bottom < 6 µl in F Bottom
Fluid alarms	low reagent, waste full
Features	Sweep, soak, purge, top & bottom, wash, variable pump speeds, Plate & Strip mode

Others

Barcode	Samples and in rack system
Plate barcode reader	(optional)
Operating system	Windows XP
Interfaces	ASTM interface

ASCII import of worklist sample ID's

Time Scheduling	schedules 3 plates
Multiple assays per plate	up to 8 assays per plate
Export options	ASCII export/report
Qualitative	user definable result classes
Quantitative	linear to quadratic regression, sigma, and many more
QA analysis	Mean, SD, CV, Standard Error and Levey-Jennings (basic version)

Power supply

Universal AC input	wide range AC 50/60 Hz, ~ 100 – 240 V ± 10 % typically Max 240 VA
--------------------	---

Dimensions

Packaging	97 cm (W) x 82 cm (D) x 75 cm (H)
Installed	120 cm (W) x 66 cm (D) x 110 cm (H) (with bottle tray and open cover)
Weight	90 kg

Environmental conditions

Temperature	operating: 15 – 30 °C transport: 5 – 50 °C
Humidity	operating: 30 – 80 % non-condensing transport: 10 – 85 % non-condensing