

Elisys Quattro

Fully Automated ELISA Analyzer

- > Developed and manufactured in Germany
- > Highest precision and reliability

ELISA

CoreLab DX



ELISA System Line

Human

Diagnostics Worldwide

Elisys Quattro

Fully Automated ELISA Analyzer for Medium to High Volume Throughput
in Hospitals and Blood Banks

More than 100 ELISA Tests Available



> Proven Technology

Advanced Performance

Open system

- > Optimised and preprogrammed for HUMAN and IMTEC ELISA tests

Continuous loading

- > New tests/plates can be loaded at any time

High throughput

- > Up to 8 different tests on one plate*
- > Up to 7 plates simultaneously
- > 4 independent incubators

Highest Processing Security

No Carry-over

- > Disposable tips for reagents and samples

Safety features

- > Clot and bubble detection
- > Password protection
- > Automatic reagent level checks
- > Barcode reader for primary tubes
- > Capacity level sensing
- > Advanced level-error logging and execution

Elisys Quattro

300 µl disposable tips

1100 µl disposable tips

REF

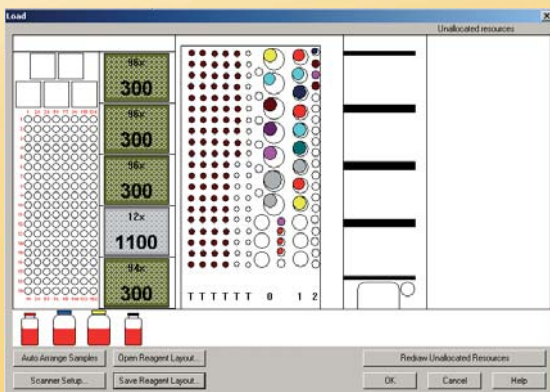
16300

16300/10

16300/11

Easy-to-use Software

- > Easy-to-use interface and intuitive operation
- > Self-explanatory structure
- > Graphical interface
- > Multitasking
- > Bi-directional host communication
- > Quality control module (Levy Jennings)
- > Locking ability during assay processing
- > Event log documentation



Convenient Use

- > Loading time and maintenance less than 10 minutes
- > Capacity of up to 200 samples
- > Up to 152 predilution tubes
- > Disposable carbon tips for reagents and samples
- > Use of original kit components
- > Barcode identification of samples and reagents

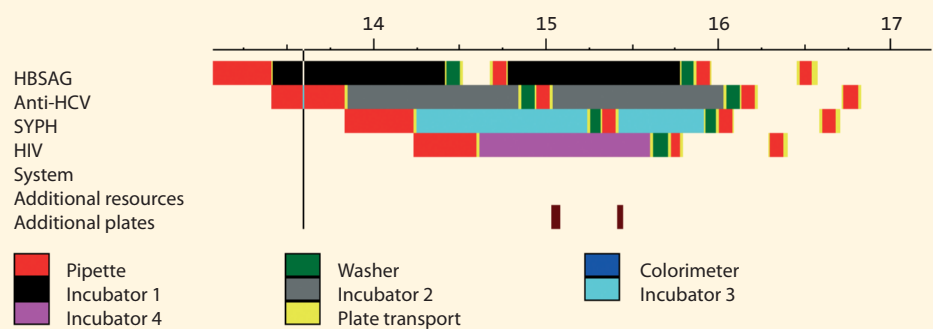


Time Management Module

“Real-Time-Mode” display

Example:

Processing time for
a typical blood bank panel
(92 samples/test)
less than 4 h



Elisys Quattro

Technical Data

Sample/Reagent

System

Number of plates: Up to 7 plates

Number of samples:

Max. of 200 tubes ø 10 – 16 mm

Number of reagents: Dependent on

rack configuration

Controls & standards:

Dependent on rack configuration

Dilution area: For up to 152 dilution tubes

Sample/reagent identification: Internal barcode

Loading: Continuous loading of plates,

samples and reagents

Lot Management: Included

Disposable Tips

Carbon tips: 300 µl and 1100 µl

Number of tips: Up to 5 tip racks for 300 µl,

1100 µl disposable tips or mixed use

Level Sense: Capacity

On-board capacity: 480 tips

Tip detection: Yes

Clot detection/bubble detection: Yes

Photometer

Light source: Halogen

Reading mode: OD (8 channel head)

Spectral range: 400 – 700 nm

Read time (96 samples): Approx. 20 seconds

Dynamic range (measurement range):

–0.100 to 3 000 OD

Accuracy: 0 – 2 000 OD 2.5 %

Linearity: 0 – 2 000 OD 1 %

Detection: Photodiode

Reading time: Less than 15 seconds

Filters: Up to 8 positions (delivered with

450 and 620 nm)

Pipetting/Processing

System

Processing time samples:

Approx. 16 minutes (96 samples)

Processing time reagents: Approx. 4 minutes

(96 positions)

Min/max volumes: 10 µl to 300 µl

(with 300 µl tip)

or 301 to 1000 µl (with 1100 µl tip)

Precision: < 5 % CV at 25 µl; < 2.5 % at 100 µl

Features: Tip detection, mixing,

multi-dispensing

Incubation

Capacity: 4 independently controlled chambers; 4 independent ambient stackers

Mixing capability: Mixing frequency adjustable

Temperature range: Ambient + 7 to 45 °C

Accuracy: ± 2°C

Uniformity: – 1.5 °C; + 1 °C

Washing

Capacity: Up to 4 buffers

Wash head: 8 channels

Plate type: Flat, U- & V shape

Wash mode: Plate/strips

Dispense volume: 200 – 2500 µl/well

Precision: +/- 5 % CV at 300 µl

Fluid alarms: Low reagent, waste full

Features: Sweep, soak, purge,

top & bottom wash, variable pump speeds

Barcode

Reader

Sample ID: Yes

Reagent ID: Yes

Plate ID: Optional

Types: 2/5 Interleaved, Code 39, 2/5 IATA, 2/5

Industrial, UPCA/UPCE, EAN (8 or 13 digits),

Code 128/EAN 128, Pharmacode, EAN

Addendum (2/5 digits), Codebar

Data Processing +

Export

Interfaces: ASTM interface RS 232

ASCII import/export of worklist sample IDs: Yes

Multiple assays per plate

Qualitative: User definable result classes

Quantitative: Linear to quadratic regression, sigma, and many more

QA analysis: Mean, SD, CV, standard error and Levy-Jennings (basic version)

External PC required Win7 32bit

Power Supply

Universal AC input: Wide range AC 50/60 Hz, 230/110 VAC

Power consumption: 400 VA

Dimensions

W x D x H: Approx. 114 x 156 x 100 cm (with waste bag and open drawer)

Weight: 95 kg

