

# HumaStar 600

Precision and reliability meet automation

- › Random access clinical chemistry system
- › Flexible system reagent concept with validated settings
- › Easy and efficient operation



**Human**

Diagnostics Worldwide

# HumaStar 600

A solution for your everyday diagnostic requirements



Proven reliability worldwide.  
In use in more than 70 countries.



## HumaStar 600

REF 16660

Medium throughput random access system

- › Up to 600 tests per hour
- › Up to 780 tests per hour with ISE
- › 95 positions for samples
- › 48 cooled positions for reagents
- › 5 open channels for user defined settings
- › Barcode reader for samples and reagents
- › Continuous programming and loading
- › Less than 5l/h water consumption
- › Multi-language software: English, Spanish, Russian, Chinese, Portuguese
- › 230V UPS included in standard delivery



Movie

## Intuitive and powerful software

- › Full traceability of reagents (e.g. lot & bottle), calibrations, users and settings
- › Searchable result database
- › Onboard and calibration stability monitoring
- › Unit conversion
- › Method specific wash options
- › Automatic daily back-up

## Excellent data management and transfer

- › ASTM E1381 and E1394 standards for robust data management
- › Real-time LIS interface for instant data exchange
- › Bi-directional RS232C communication for versatile connectivity
- › Data export and import capabilities for comprehensive record keeping

## HUMAN's reagent production facility

In Magdeburg, Germany we produce our reagents in accordance with the latest quality standards, guaranteeing consistent quality at the highest level.



## Flexible system reagent concept

- › Plug & run HumaStar system reagents
- › Ready-to-use and available in two kit sizes
- › Usable for HumaStar 300SR and HumaStar 600
- › More than 45 reagents "Made in Germany"
- › Prefilled barcoded reagent bottles
- › Validated assay settings for highest quality
- › Up to 60 days reagent onboard stability

## Comprehensive testing with ISE module

- › Up to 240 tests per hour with built-in ISE Module
- › Routine parameters: sodium, potassium and chloride
- › Serum, plasma and urine samples
- › 6 to 12 months onboard stability of electrodes

## Robust performance with efficient operation

- › Flexible operations through user-defined panels
- › Two independent reaction carousels minimizing downtime
- › Clot detection and liquid level sensor preventing interruptions
- › Convenient loading of reagents, samples and consumables
- › STAT rack for immediate measurements
- › Single- and multi-calibrators available
- › Automatic dilution for multipoint calibration

## Guaranteed accuracy for reliable results

- › Utilize Levey Jennings charts and Youden plots for thorough quality control
- › Implement Westgard rules to enhance result reliability
- › Avoid carry-over by separation of critical assay combinations

# HumaStar 600

More than 45 high quality reagents „Made in Germany“

## Immune status

anti-Streptolysin-O,  
Complement C3 and C4, CRP,  
Immunoglobulins IgA, IgG, IgM

## Liver panel

Albumin, Alkaline Phosphatase,  
Bilirubin Total and Direct,  
Cholinesterase, gamma-GT,  
GOT (ASAT), GPT (ALAT),  
Total Protein

## Kidney panel

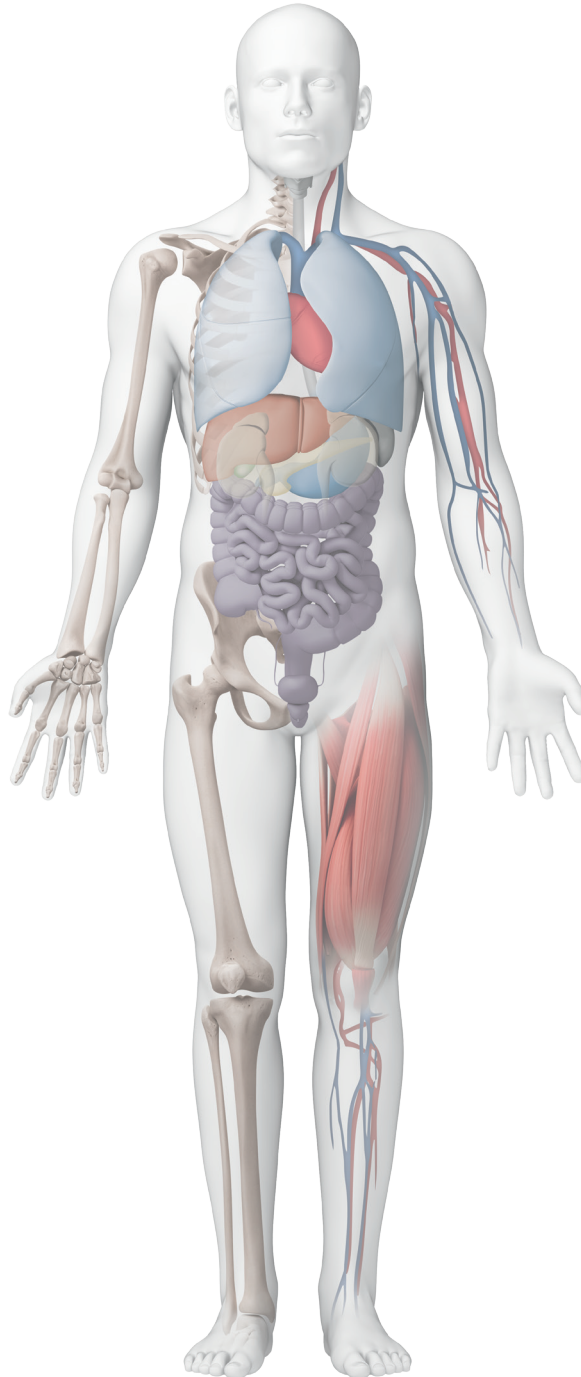
Calcium, Creatinine, Cystatin-C,  
Inorganic Phosphorus,  
Magnesium, Microalbumin,  
Potassium, Sodium, Urea/BUN,  
Uric Acid, Urinary Total Protein

## Bone metabolism

Alkaline Phosphatase, Calcium,  
Inorganic Phosphorus, Magnesium

## Rheumatic diseases

anti-Streptolysin-O,  
Complement C3 and C4, CRP,  
Rheumatoid Factors



## Arteriosclerosis

### Cardiac risk assessment

Cholesterol, HDL-/LDL-Cholesterol,  
Homocysteine, Triglycerides

## Cardiac panel

CK-NAC, CK-MB, GOT (ASAT),  
GPT (ALAT), Homocysteine, LDH

## Pancreatic tests

alpha-Amylase, Lipase,  
Pancreatic Amylase

## Diabetes

Glucose, HbA1c, Microalbumin,  
Triglycerides, Urinary Total Protein

## Anemia

Iron, Total Iron Binding Capacity,  
Transferrin

## Water & electrolyte balance

Albumin, Chloride, Potassium,  
Sodium, Total Protein



For other available reagent kits and wash solutions,  
please refer to our website or catalog.



HUMAN Gesellschaft für Biochemica und Diagnostica mbH  
Max-Planck-Ring 21 · 65205 Wiesbaden · Germany  
Tel. +49 6122-9988-0 · Fax +49 6122-9988-100 · e-mail: human@human.de · www.human.de

# Human

Diagnostics Worldwide