

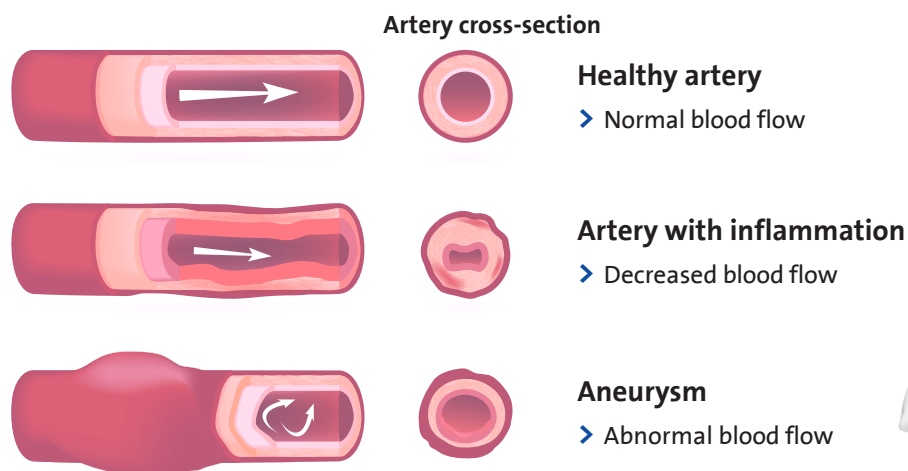
Vasculitis

Autoantibodies inflaming blood vessels

What is Vasculitis?

Vasculitis describes a group of chronic diseases that cause inflammation of human blood vessels. The immune system attacks healthy blood vessels leading to a chronic inflammation resulting in thickening of blood vessel walls and thereby reducing the width of the passageway through the vessels.

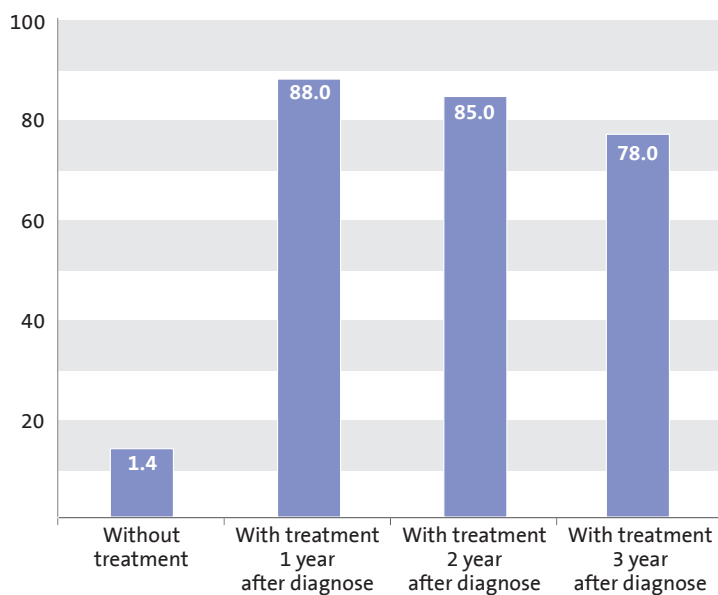
Missing diagnosis can become life threatening



A restricted blood flow in inflamed blood vessels can cause severe organ and tissue damage and lead to aneurysms or rupture of affected vessels.^{1,2}

Therefore, a rapid diagnosis is essential in order to prevent life threatening consequences.

Survival rate of vasculitis patients in %^{3,4}



Vasculitis

Diagnosis based on identification of autoantibodies

Vasculitis can affect any blood vessel in any organ. It may occur as secondary disorder, which is associated with an underlying disease, or as primary disorder.⁵

Diagnosis of primary vasculitis is based on the identification of different autoantibodies being produced as a result of an excessive immune response.⁶

In which cases is vasculitis testing recommended?

- > Recurrent sinusitis
- > Respiratory manifestations: lung infiltrates, inflammation of bronchia, cavities
- > Glomerulonephritis
- > Presence of palpable purpura or livedo reticularis
- > Oral ulcerations

Diseases	Main autoantibody	Autoantigens
Microscopic polyangiitis (MPA)	MPO-ANCA	Myeloperoxidase
Granulomatous polyangiitis (GPA, formerly Wegener's granulomatosis)	PR3-ANCA	Proteinase 3
Eosinophilic granulomatous polyangiitis (EGPA, formerly Churg-Strauss Syndrome)	MPO-ANCA	Myeloperoxidase
Anti-GBM disease (formerly Goodpasture's disease)	Anti-GBM	alpha3 chain of type IV collagen
Hypocomplementemic urticarial vasculitis	Anti-C1q	Complement factor C1q

Ordering information

Name	Unit/Size	Antigen	REF
VASCULITIS-LIA	24 tests	PR3, MPO and GBM	ITC82040
GBM-ANTIBODIES IgG ELISA	96 tests	GBM	ITC82070
MPO-ANCA IgG ELISA	96 tests	Myeloperoxidase	ITC82030
PR3-ANCA IgG ELISA	96 tests	Proteinase 3	ITC82020
Anti-C1q IgG ELISA	96 tests	C1q	ITC59033

References

1. Tyagi, S., Safal, S., Tyagi, D., Indian J Thorac Cardiovasc Surg, 2019 (35), 47-56
2. Litt, B., et al., CMAJ, 2017 (189), 464-467
3. Jatwani, S., Goyal, A., 2022, StatPearls Publishing
4. Flossmann, et al., Ann Rheum Dis., 2010, 70 (3), 488-494
5. Okazaki, T., Shinagawa, S., Mikage, H., J Gen Fam Med., 2017, 18 (2), 72-78
6. Wiik, A., Arthritis Res Ther, 2003, 5, 147-152

